

HIGH LEVEL ALARM SWITCH PART # 700250



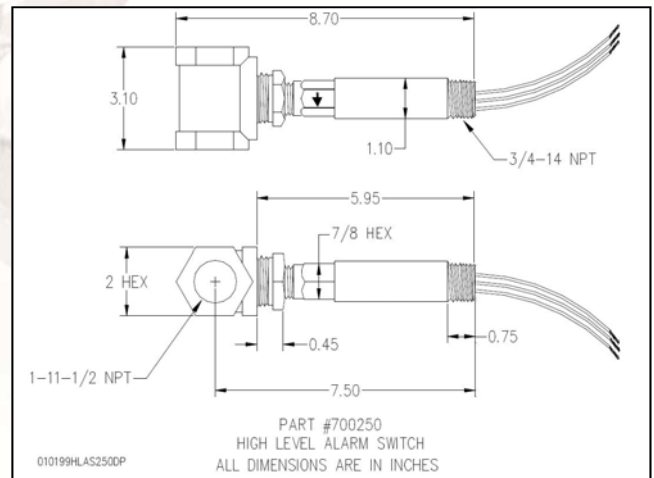
INTRODUCTION

Drain-All No-loss condensate traps provide unique, high quality, energy efficient, reliable product solutions for draining and moving liquids such as: (1) condensate removal from compressed air systems, (2) oils and lubricants from manufacturing or test equipment, and (3) liquids from atmospheric and vacuum systems. Drain-All condensate traps are produced under a certified ISO 9001 Quality Management System to ensure the product exceeds customer expectations.

Drain-All products are industrially robust, require little maintenance and since they do not require any electrical connections, can be easily installed on equipment at any point in a system. The unique design maintains a liquid barrier inside the trap which prevents the escape of costly process gas. As a result, no-loss condensate traps provide energy savings when compared to timer drains and manual valves. These patented devices are backed by an excellent warranty and a strong technical support staff who are available to assist customers in developing engineered solutions for all of their liquid drainage problems.

The Drain-All product line includes a wide array of products, options and accessories which enable customers to customize their particular liquid drainage systems. The Drain-All condensate drains are compatible with all manufactures of compressors, aftercoolers, filters/separators, receivers and dryers.

SPECIFICATIONS	
Part Number	700250
Float Chamber	Brass
Float	Stainless Steel
Float Lever Arm	Stainless Steel
Body	Brass
Leak Proof	Eliminates possibility of liquid entering housing
Pressure Rating PSIG (Barg)	250 (17.2)
Min Specific Gravity	0.7
Temperature Limit °F (°C)	220 (105)
Wiring Connection	3-18" (460 mm) leads, 18 gauge Black=Common, Blue=N.O., Red=N.C.
Piping/Mounting Connection	1-11-1/2 NPT on Float Chamber 3/4-14 NPT on Conduit Connection
Installation	Horizontal, index arrow pointing down
Weight lbs (kg)	1.75 (0.8)
Electrical Rating	U.L.: 5A @ 125/250 VAC C.S.A.: 5A @ 125/250 VAC 5A Resistive, 3A Inductive @ 30 VDC
Optional Listings/Standards	Explosion-Proof, U.L. and C.S.A. Listed Class I, Groups A,B,C & D Class II Groups E, F & G

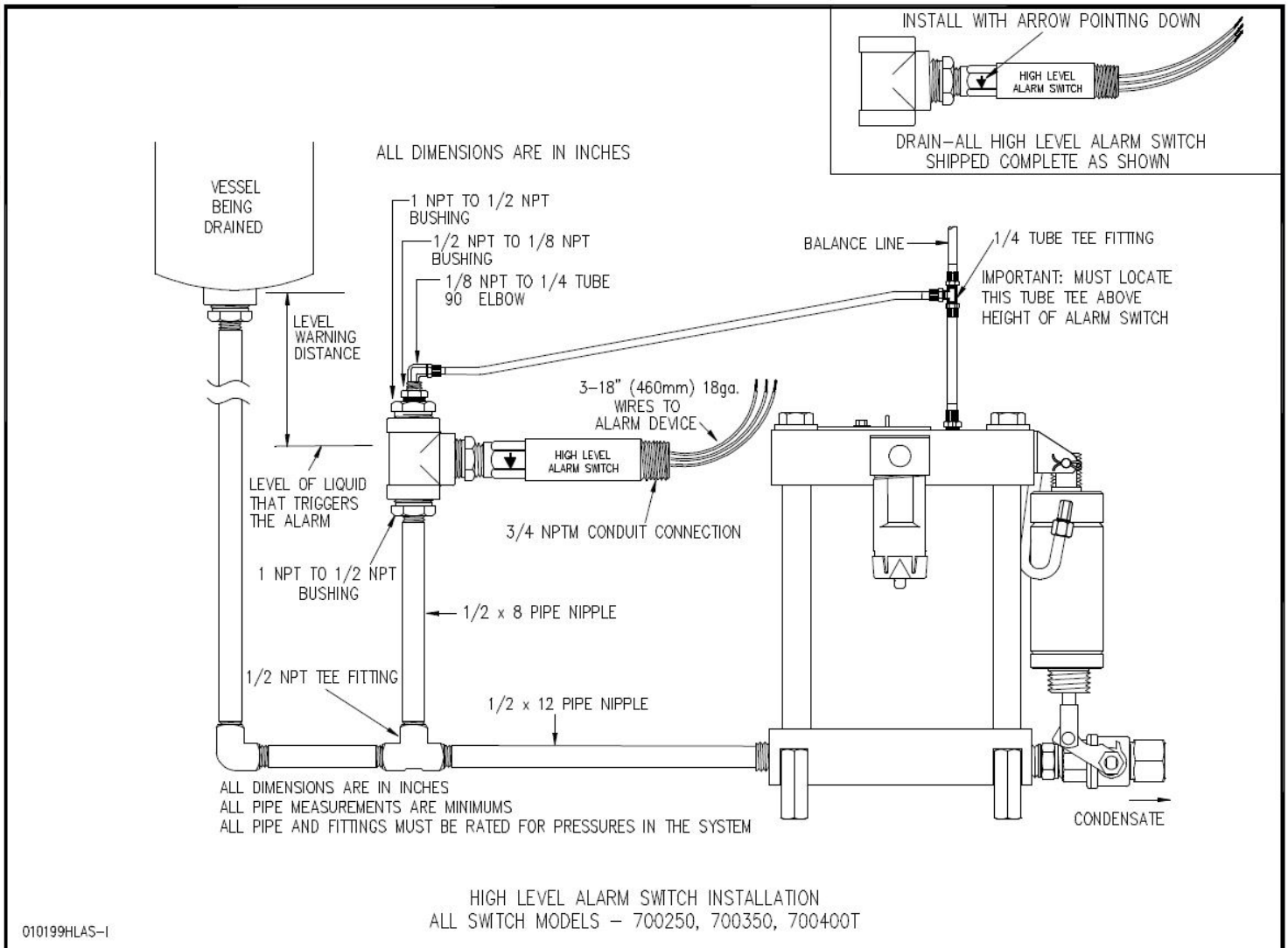


Quality System ISO 9001 Certified United States Patent: 5,983,919

+1 314.781.6022 FAX +1 314.781.7859 INFO@DRAIN-ALL.COM WWW.CDIVALVE.COM



HIGH LEVEL ALARM SWITCH — 700250



Installation:

Unpack switch and remove any packing material found inside lower housing or float chamber. Switch must be installed with body in a horizontal plane and arrow on side pointing down. Connect external float chamber to vertical sections of 1"NPT pipe at appropriate level as shown in the drawing. Inspect and clean wetted parts at regular intervals.

Electrical Connections:

Connect wire leads in accordance with local electrical codes and switch action required. N.O. contacts will close and N.C. contacts will open when liquid level causes float to rise. They will return to "normal" condition on decreasing liquid level. Black = common, Blue = N.O. and Red = N.C. All wiring, conduit and enclosures must meet applicable codes for hazardous areas. Conduits and enclosures must be properly sealed. For outdoor or other locations

where temperatures vary widely, precautions should be taken to prevent condensation inside switch or enclosure. Electrical components must be kept dry at all times.

Caution:

To prevent ignition of hazardous atmospheres, disconnect the device from the supply circuit before opening. Keep assembly tightly closed when in use.